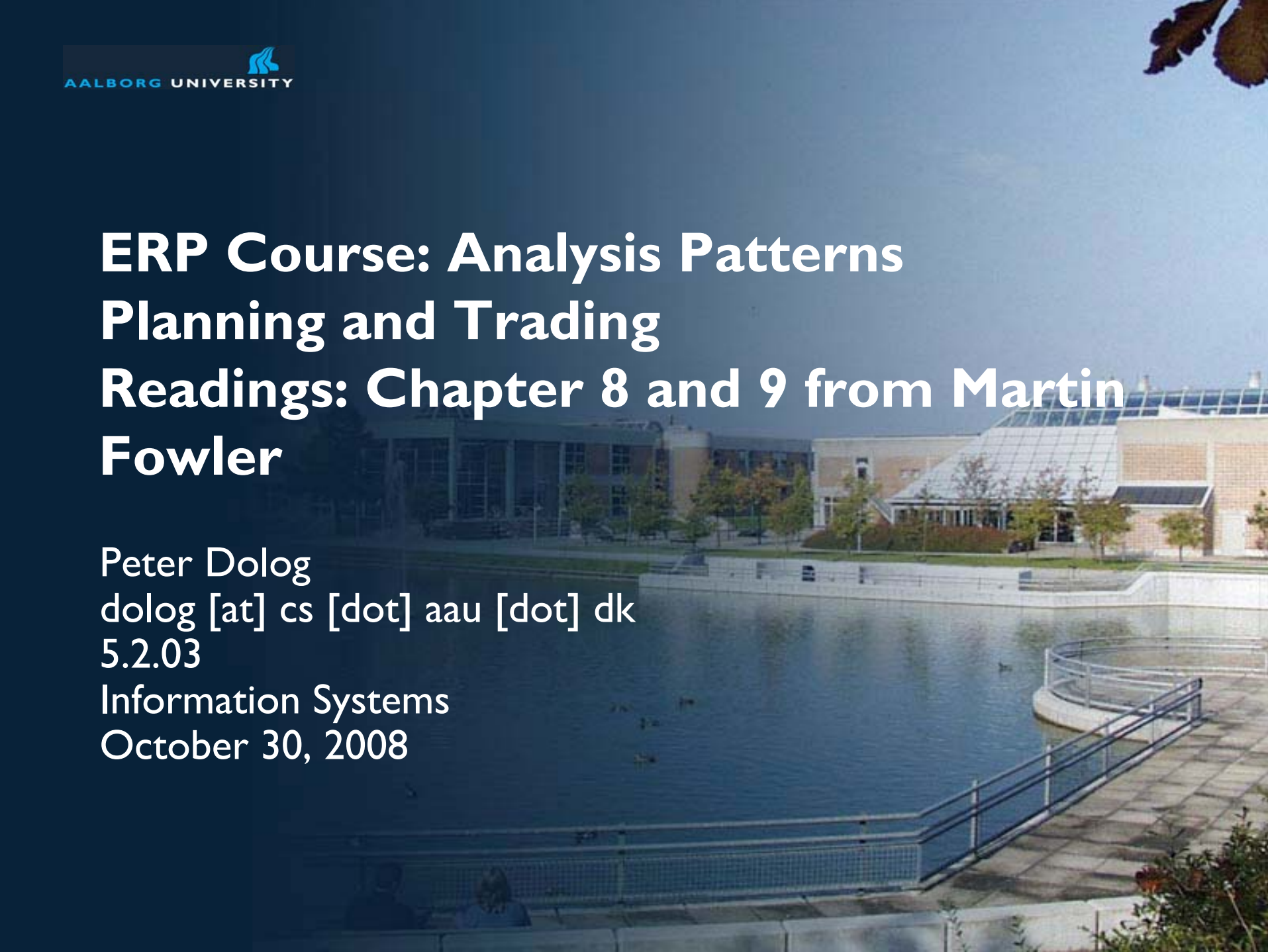


ERP Course: Analysis Patterns Planning and Trading Readings: Chapter 8 and 9 from Martin Fowler

Peter Dolog
dolog [at] cs [dot] aau [dot] dk
5.2.03
Information Systems
October 30, 2008



Planning

Plan is a set of actions which will be carried out by resources

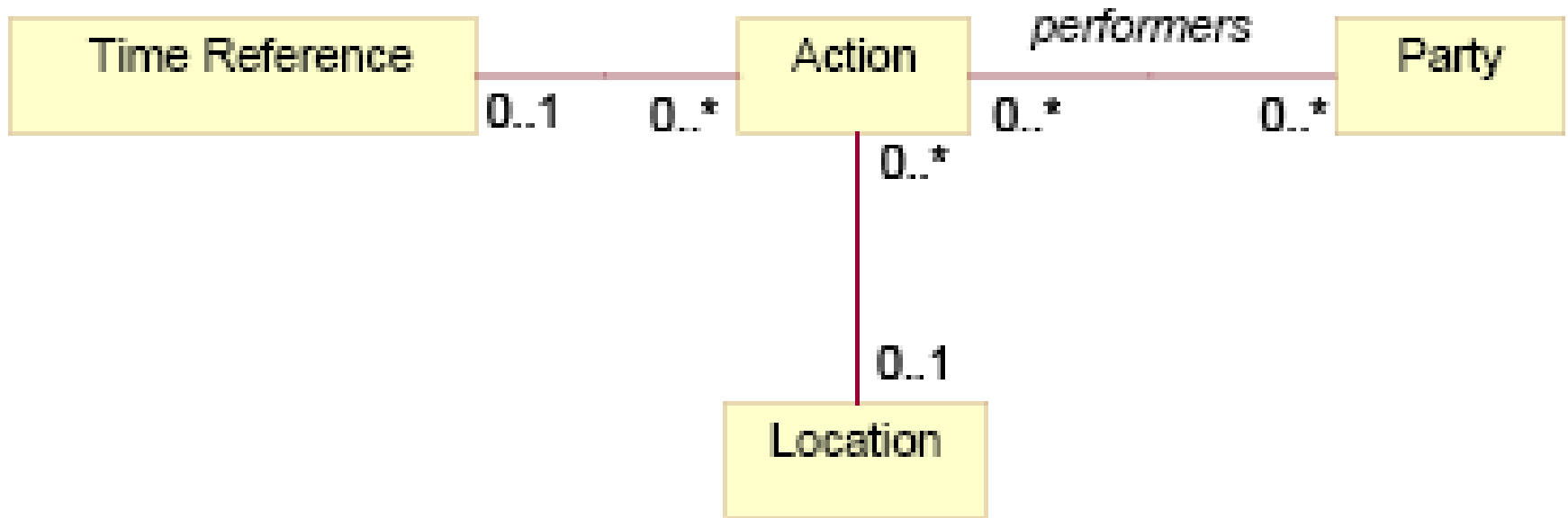
Actions are planed, completed, abandoned,
postponed/suspended

They have resources allocated

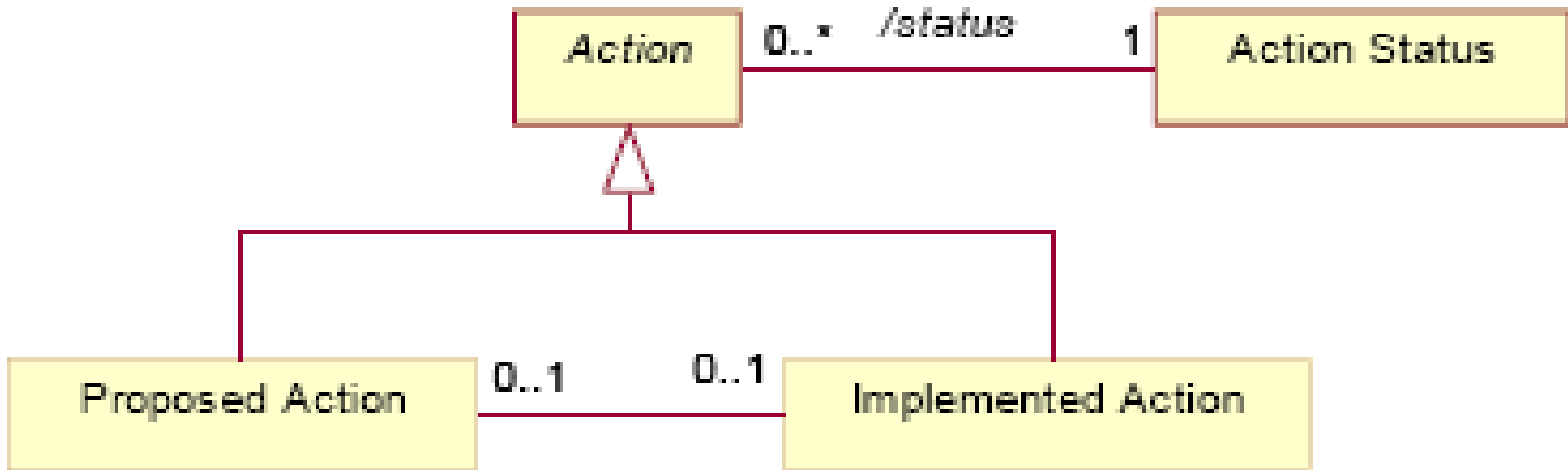
A protocol is a set of actions repeated many times

Activities have outcomes and conditions to start

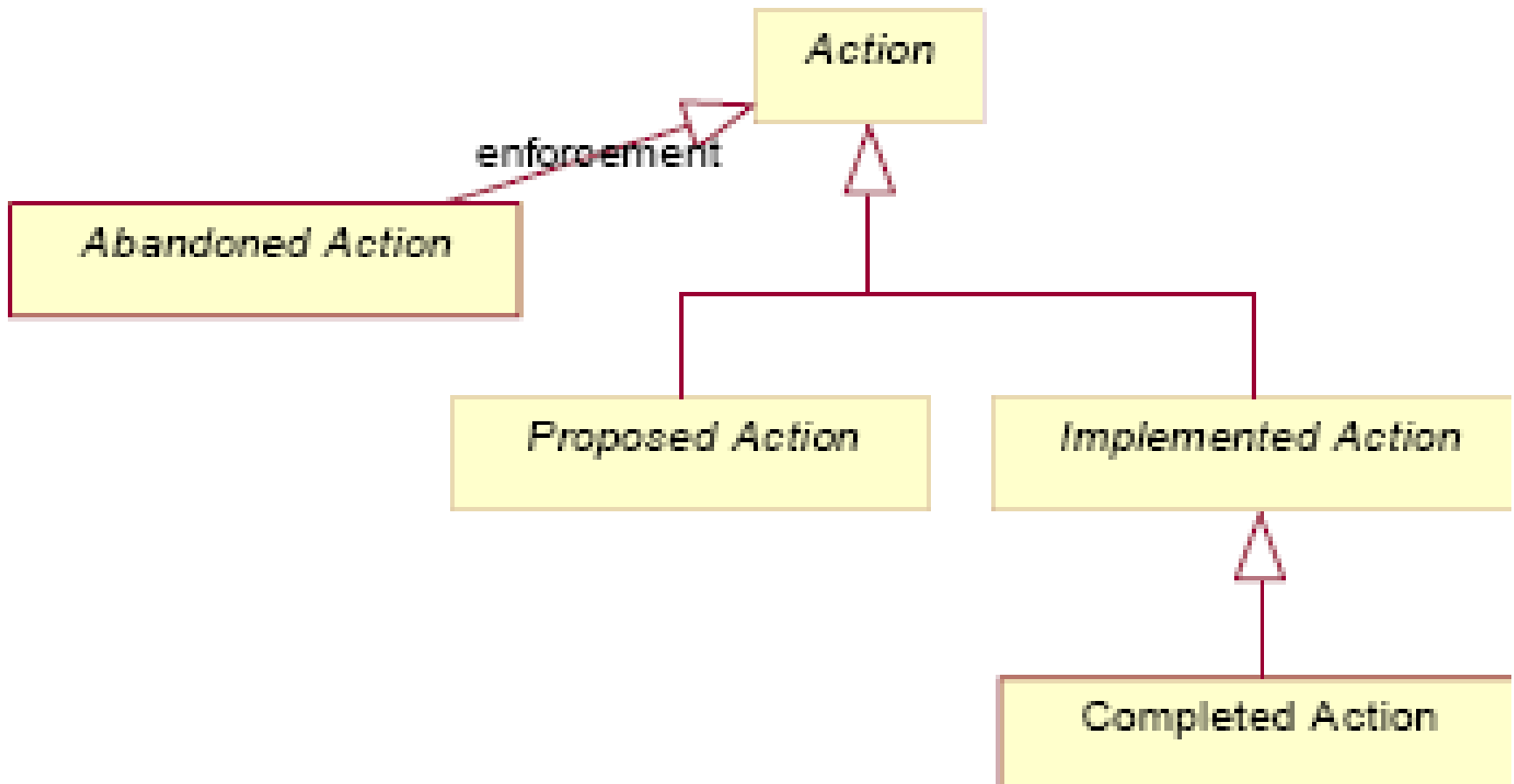
Properties of Actions



Basic Structure of Plans and Actions

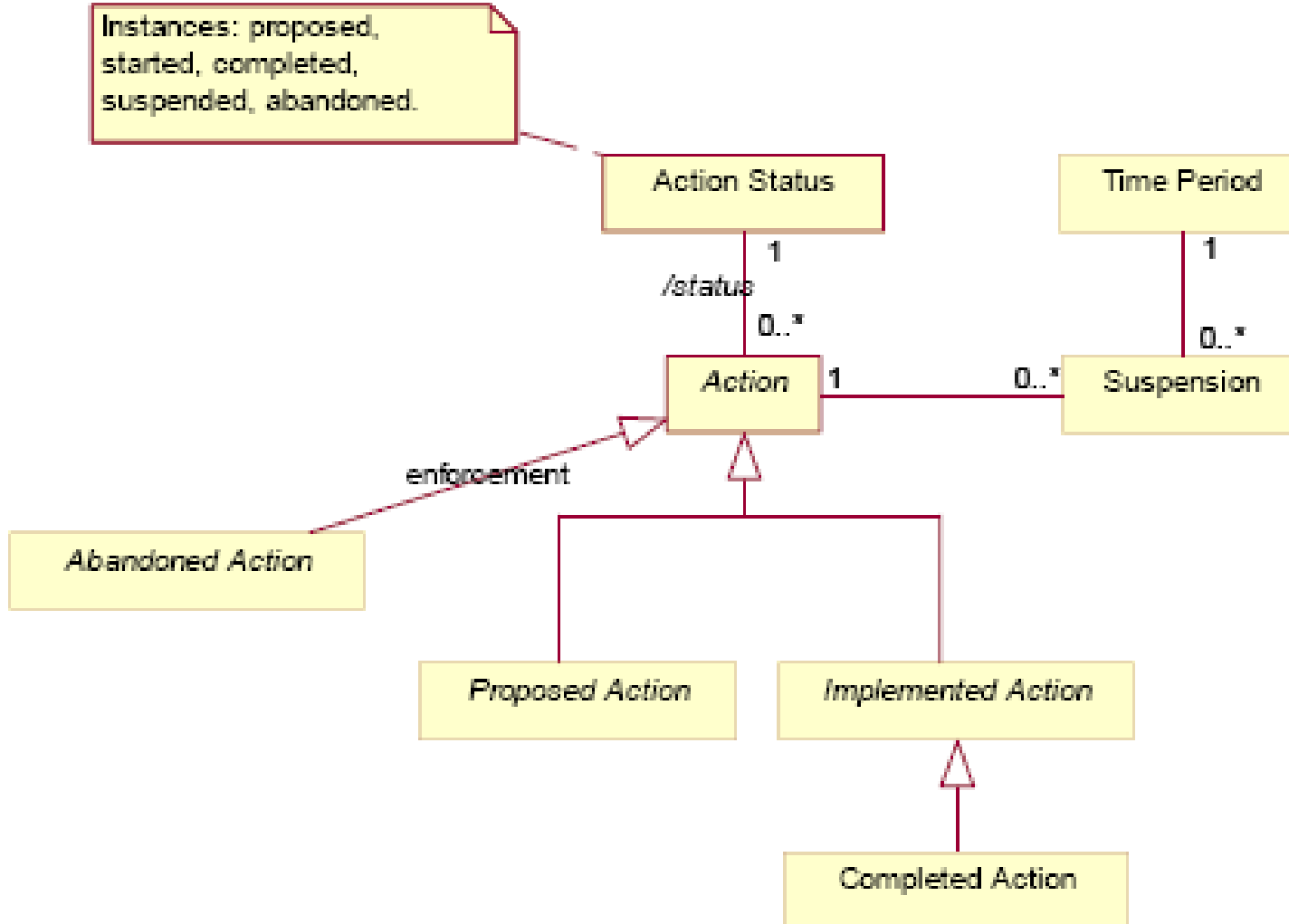


Complemented and Abandoned Actions

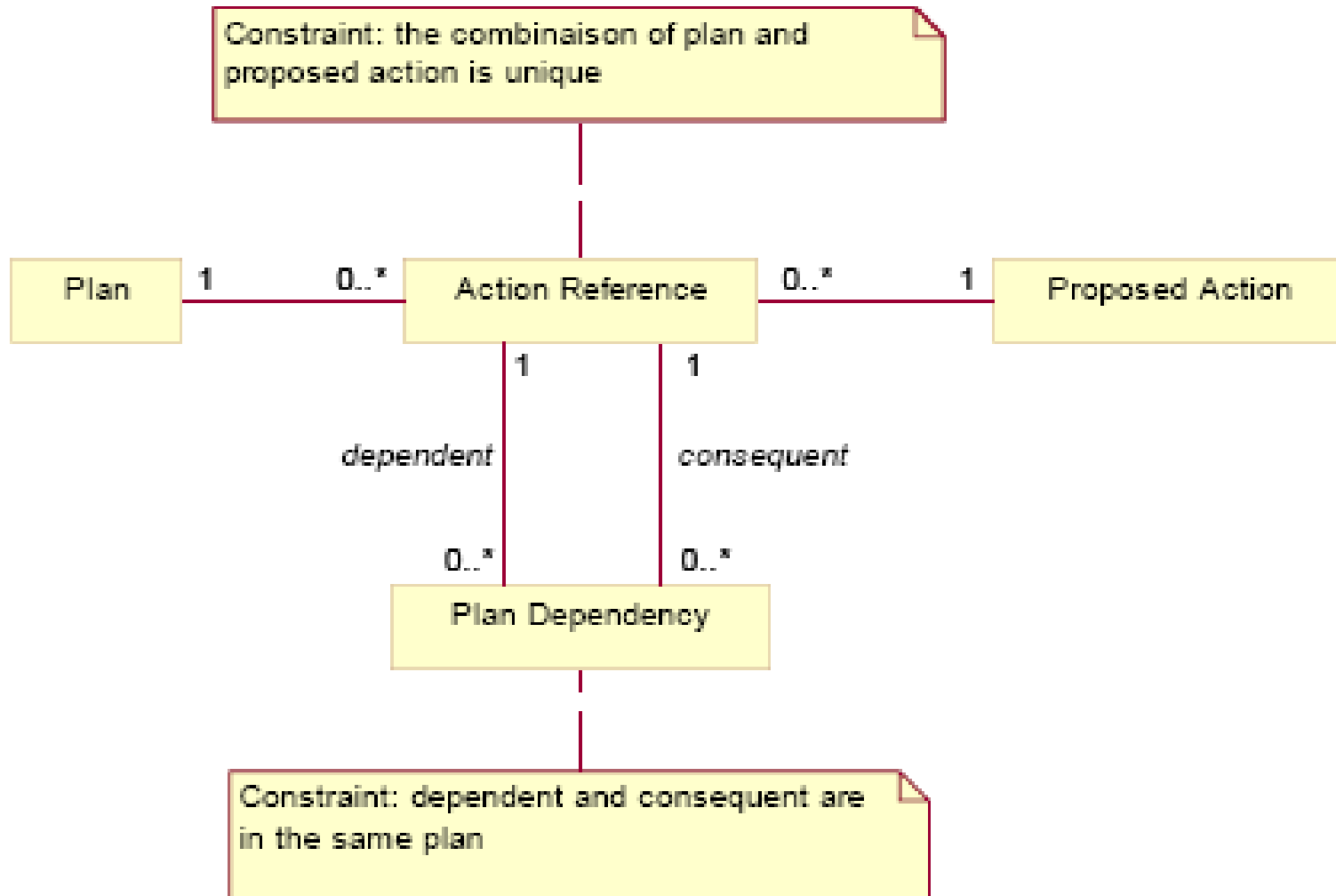


Suspension of Actions

Instances: proposed, started, completed, suspended, abandoned.

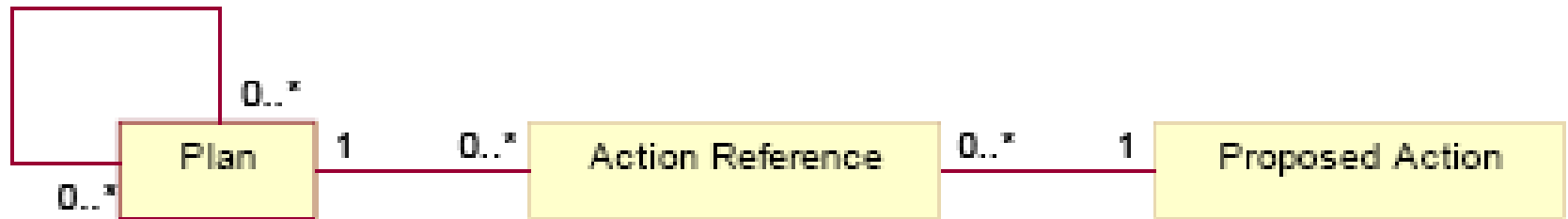


A Plan Consisting of References to Proposed Actions

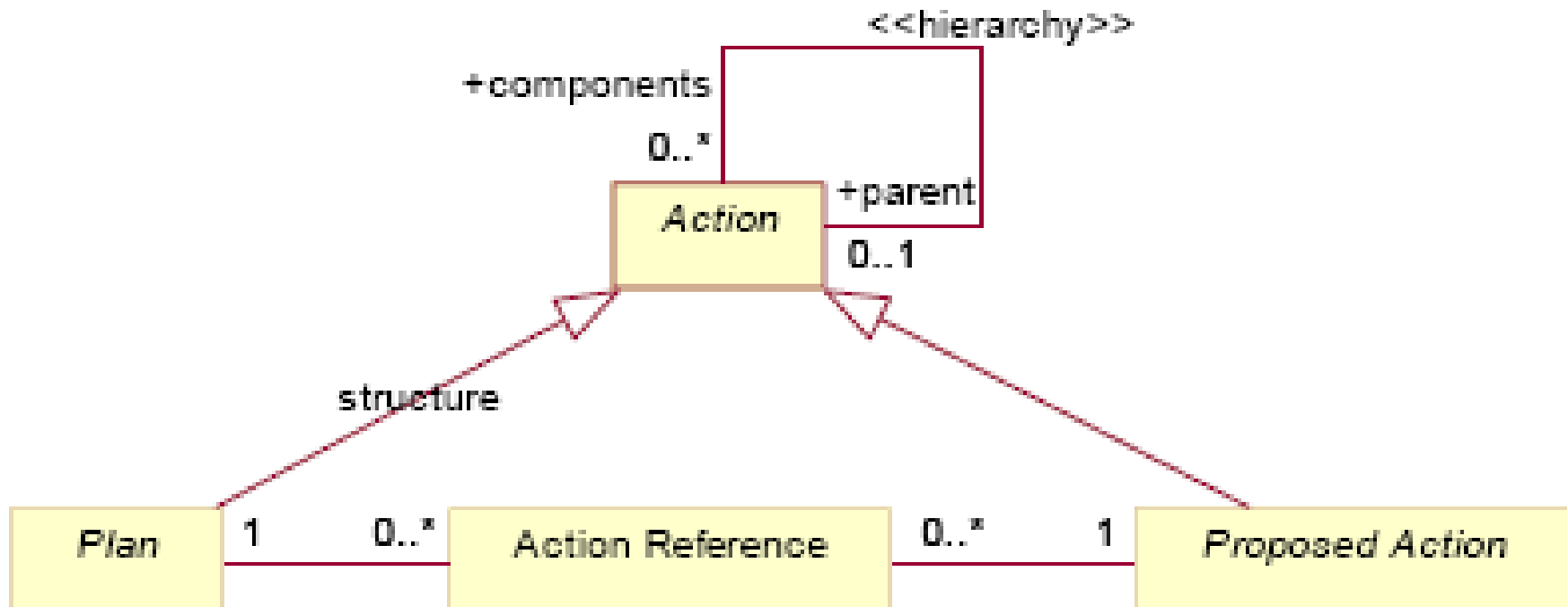


Replacement Plans

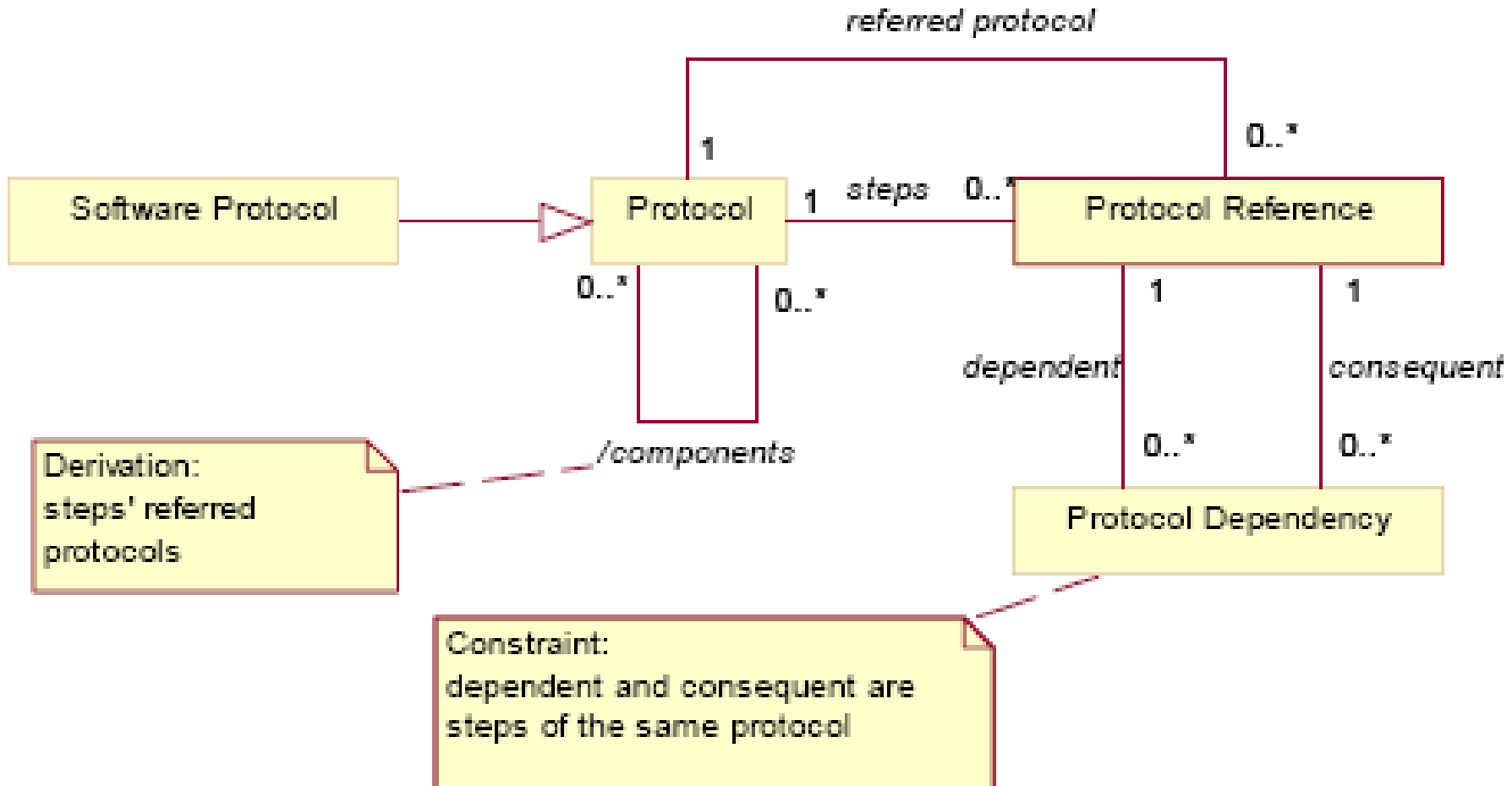
replacements



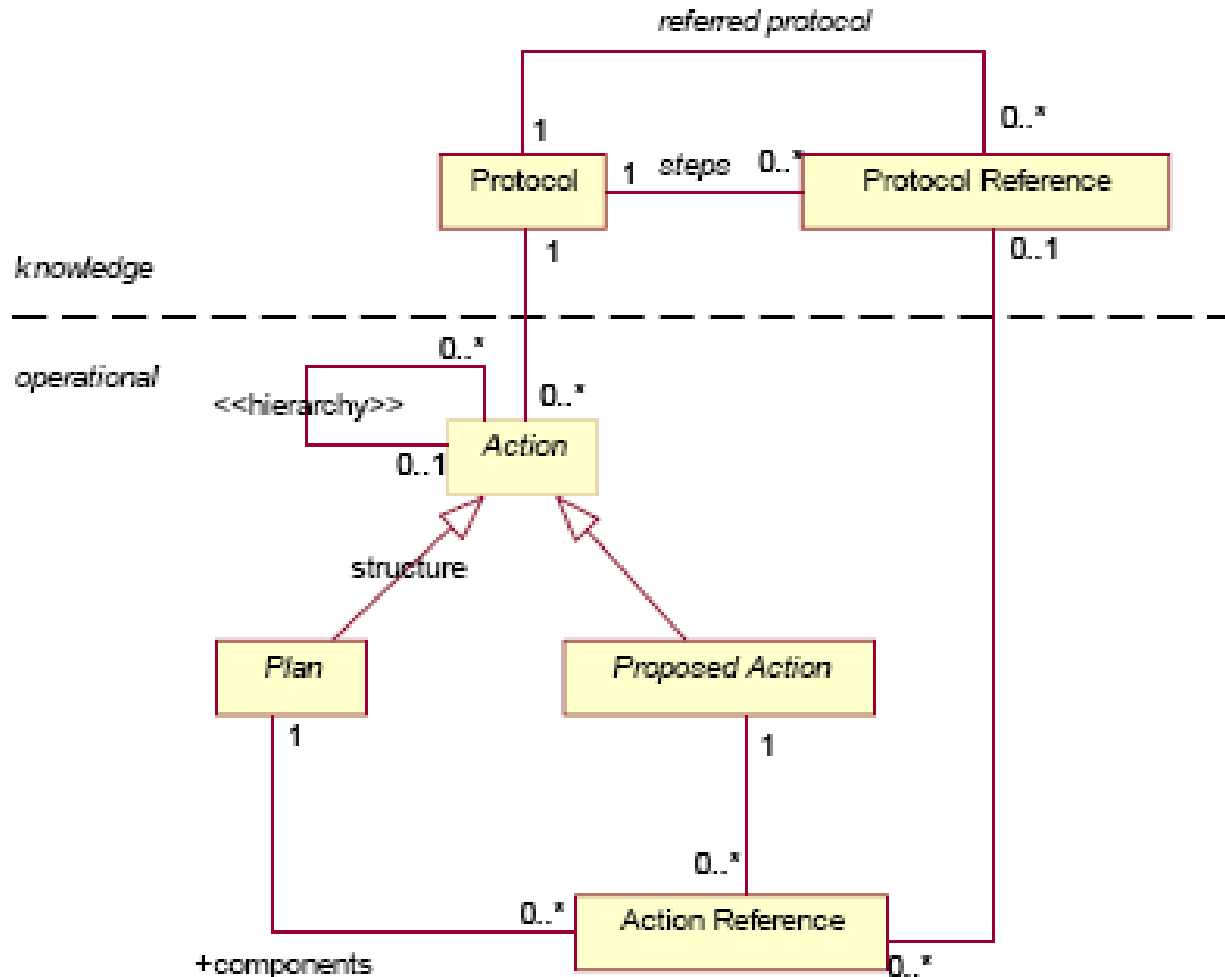
Plans as Actions and Compound Actions



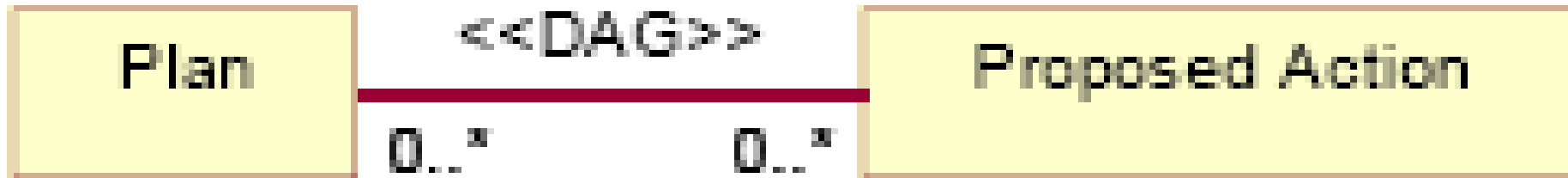
Structure for Protocols



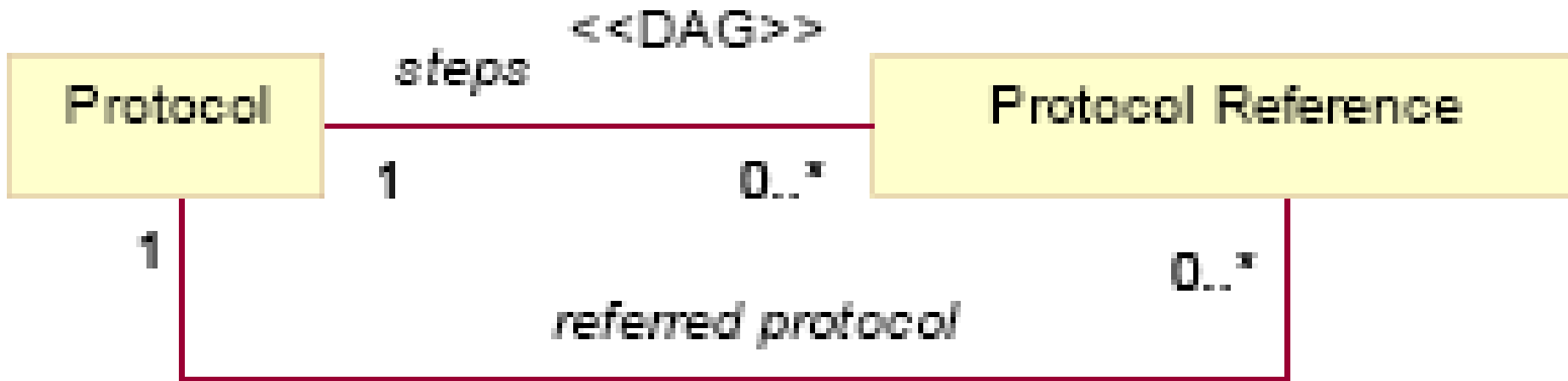
Relationships among Action, Plan, and Protocol



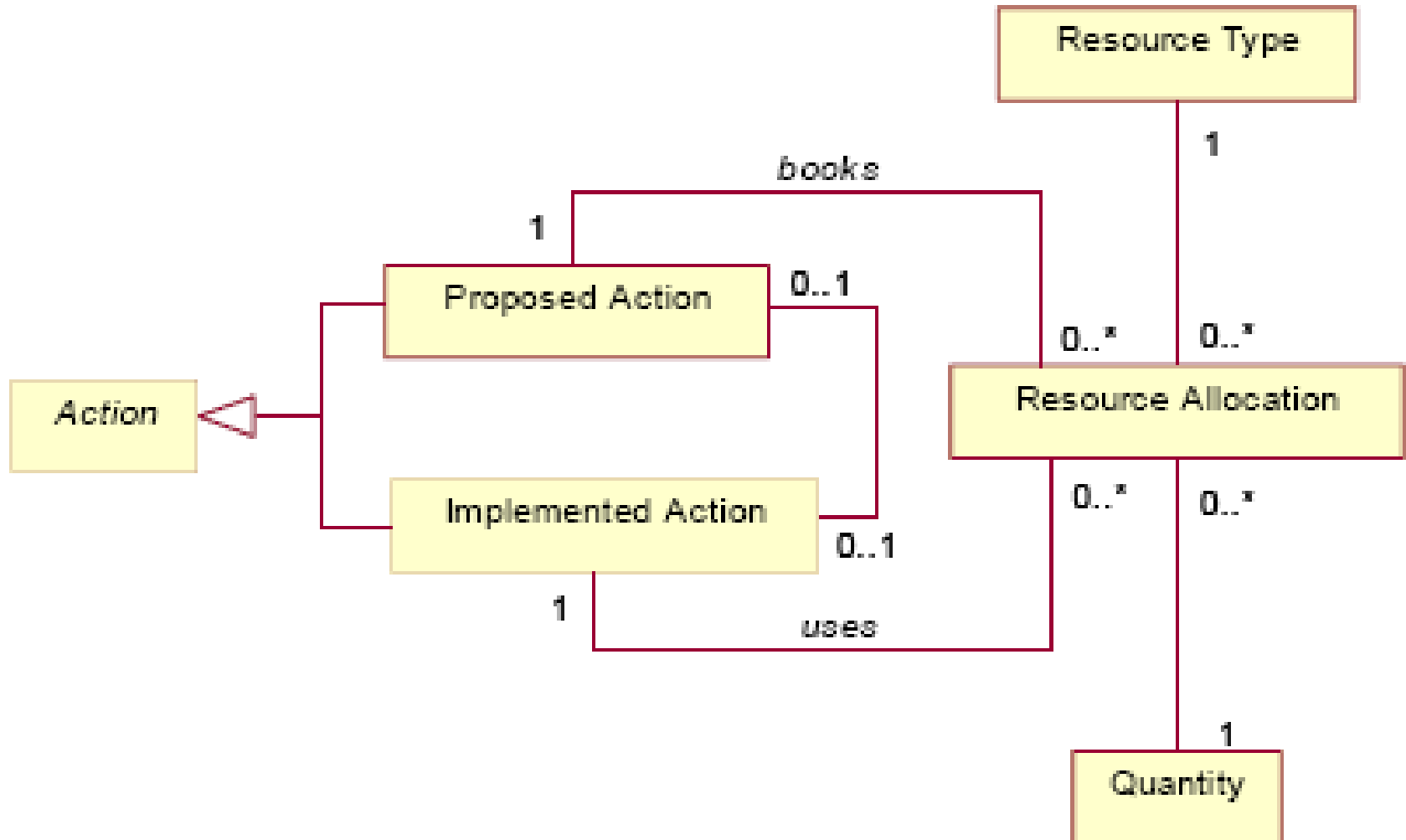
Plan as a DAG of Proposed Actions



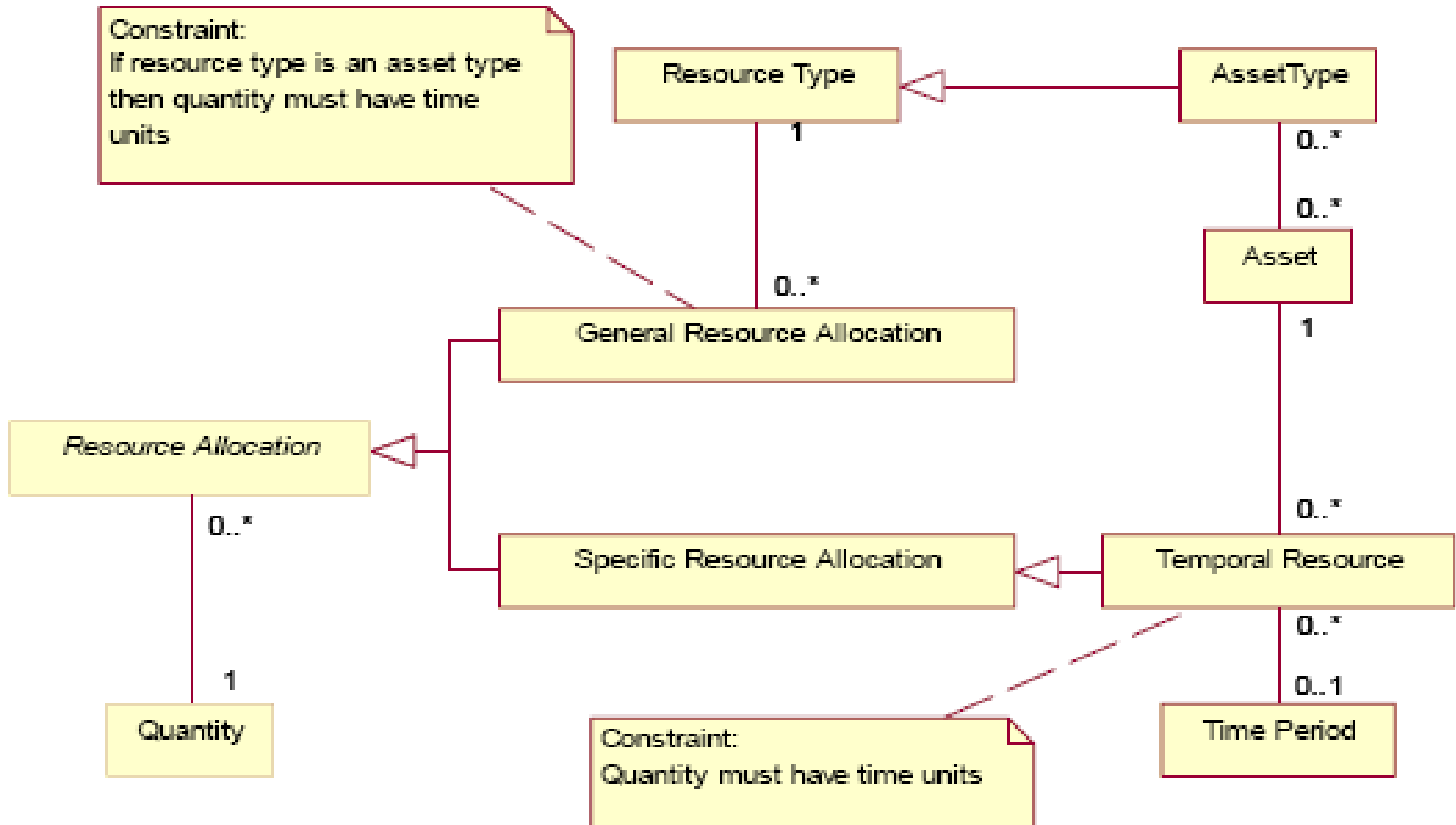
Protocol as DAG



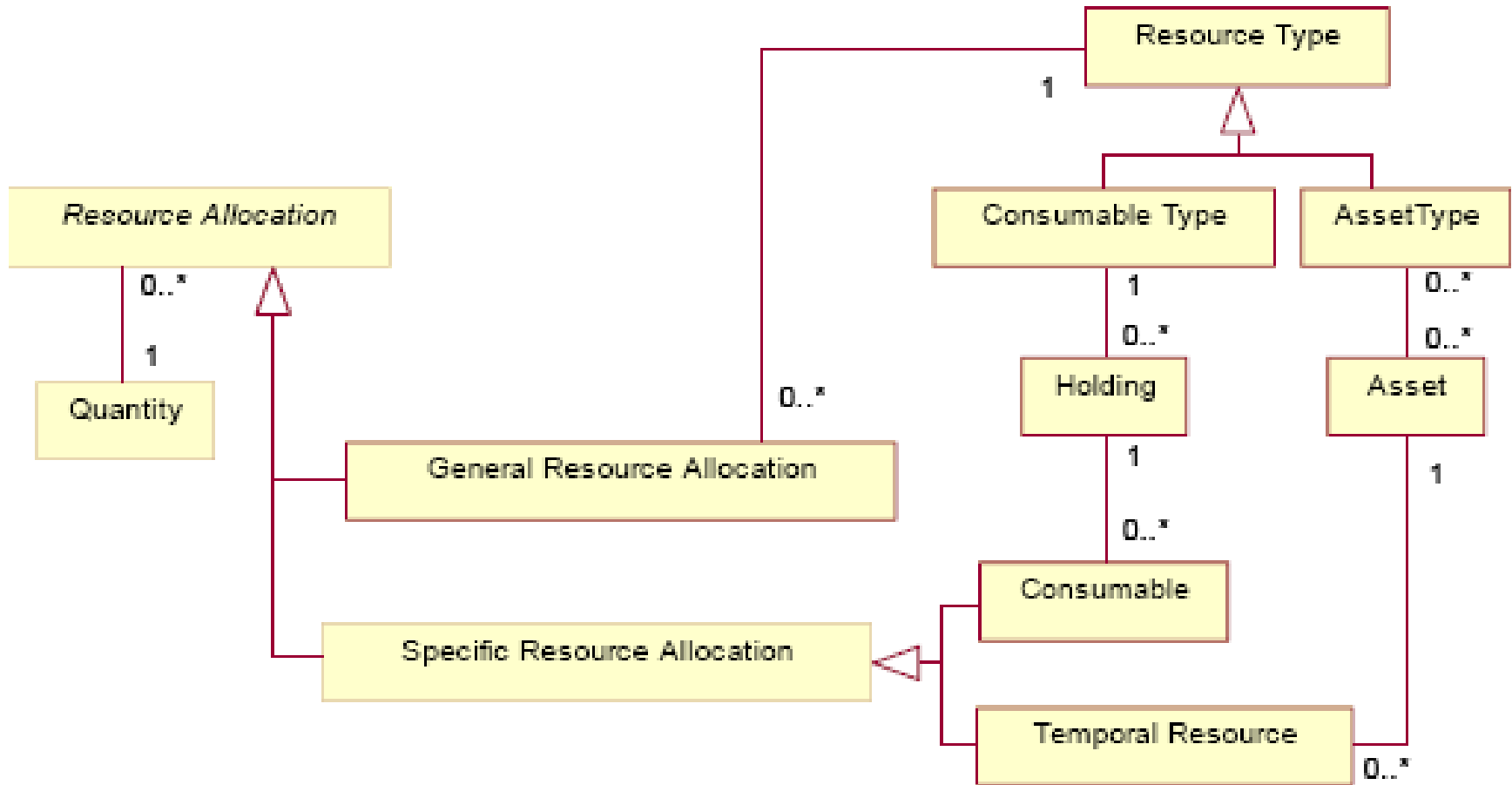
Action's Use of Resources



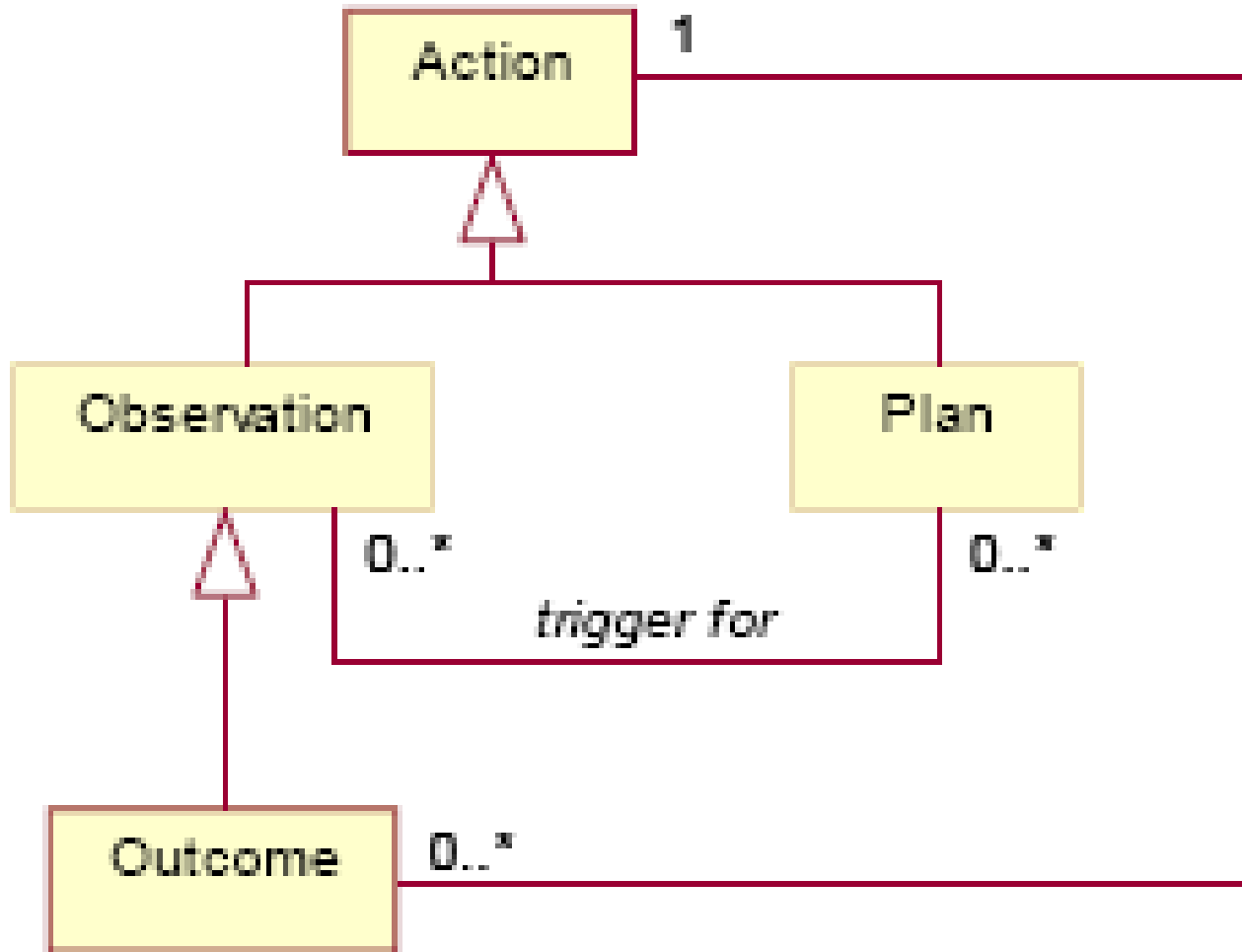
Resource Allocation for Assets



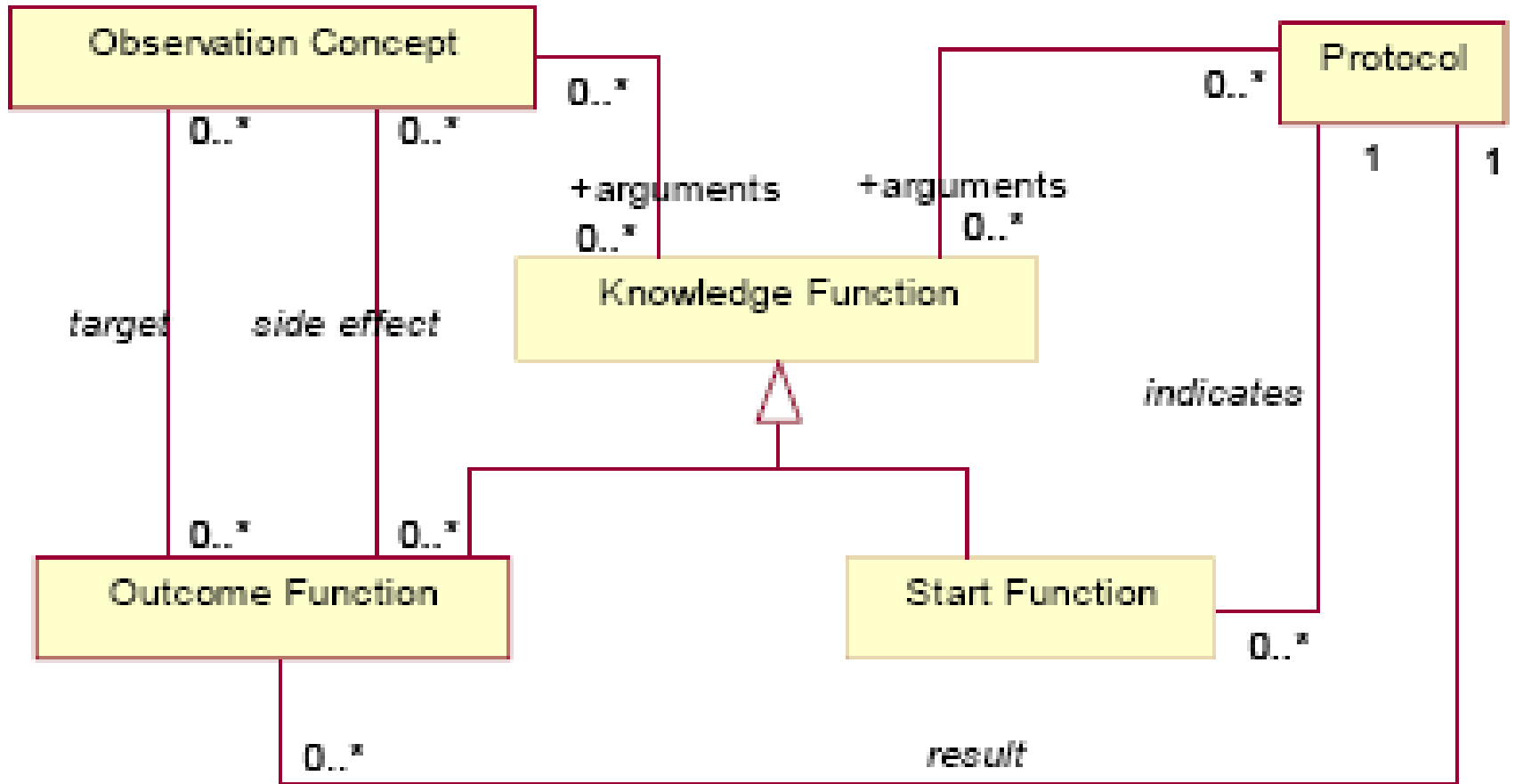
Allowing Specific Allocations of Consumables



Links Between Observation, Plan, and Action



The Use of Start and Outcome Functions at the Knowledge Level



Trading

Trade is about buying and selling

Trade is described by a contract

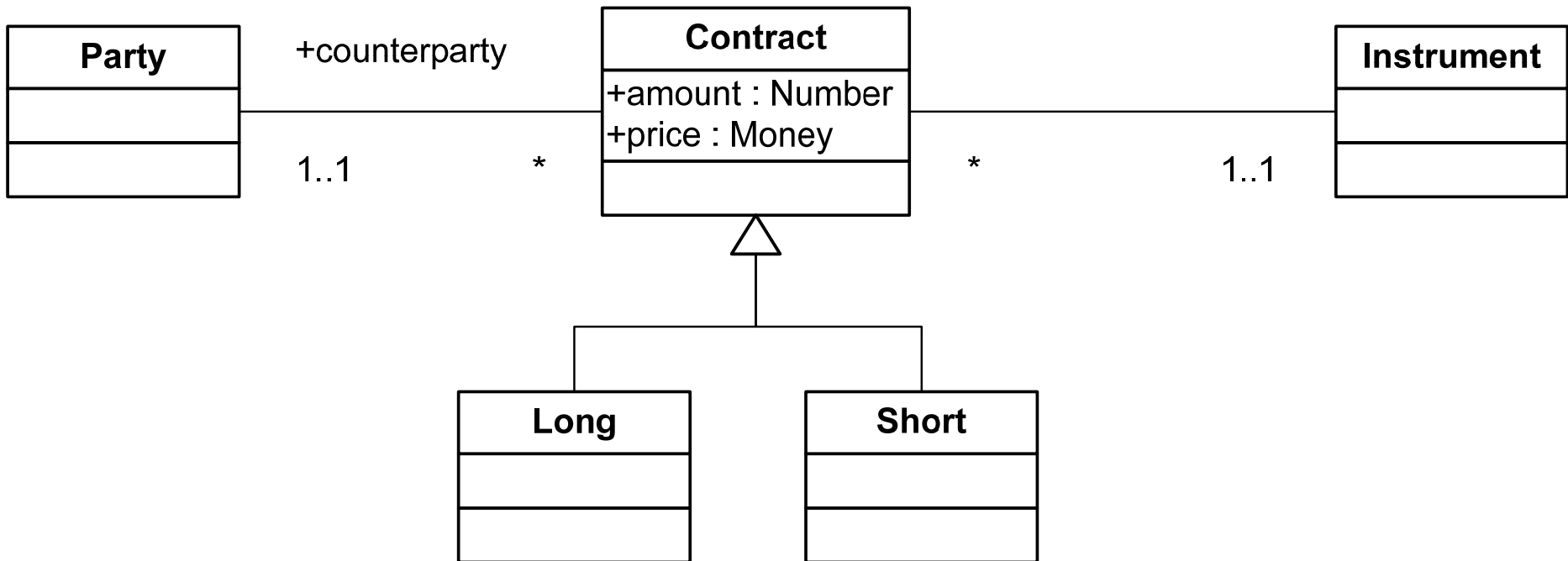
Contracts can be grouped into portfolios

Prices of goods change according to whether you look at them

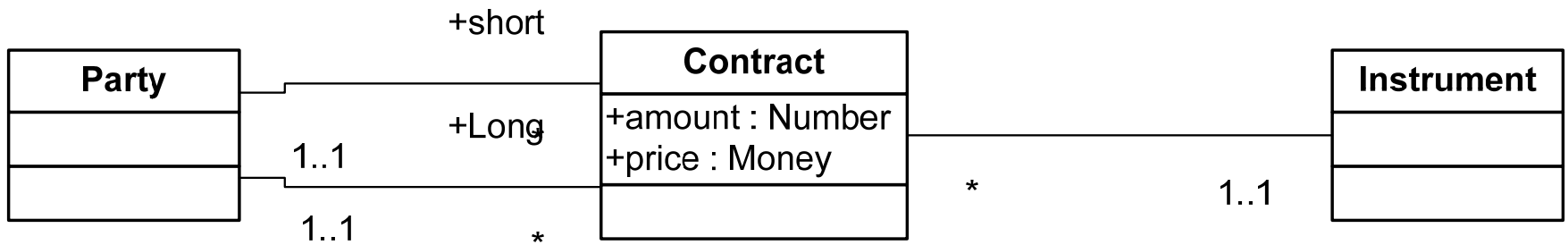
from selling and buying point of view – quotes

Rapid changes can be captured by scenarios

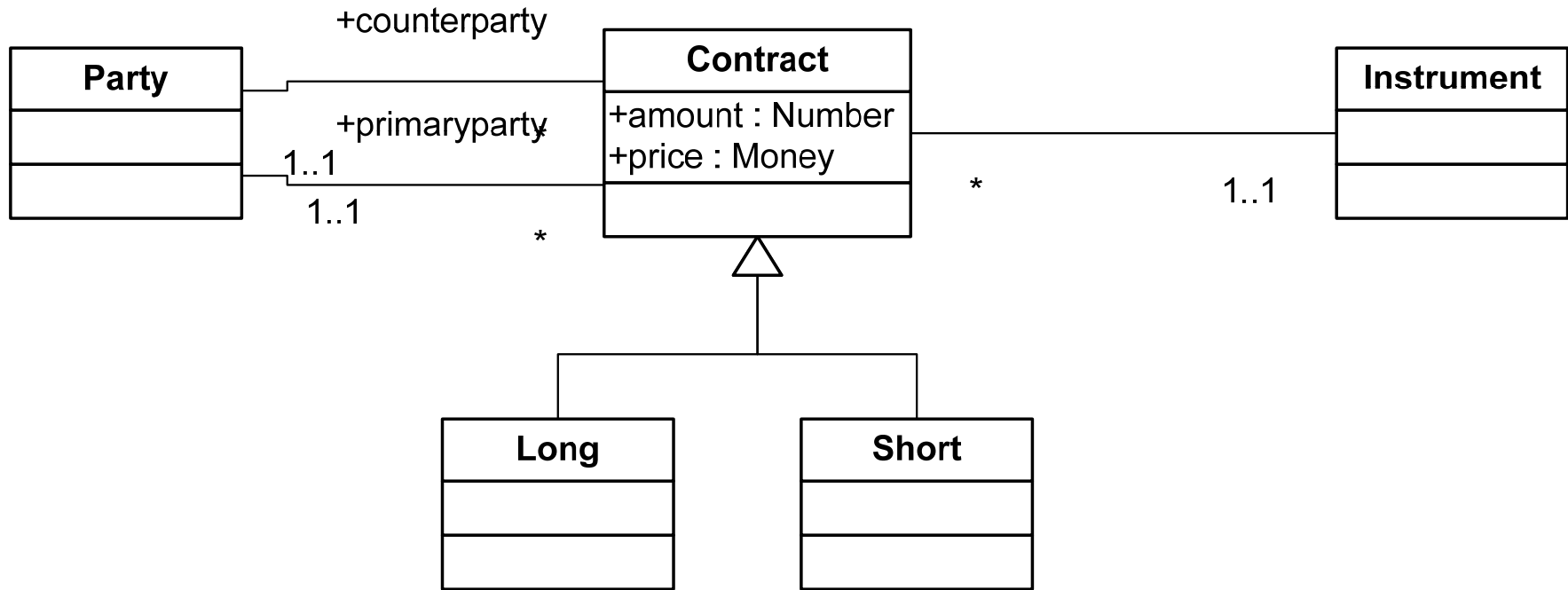
Contract



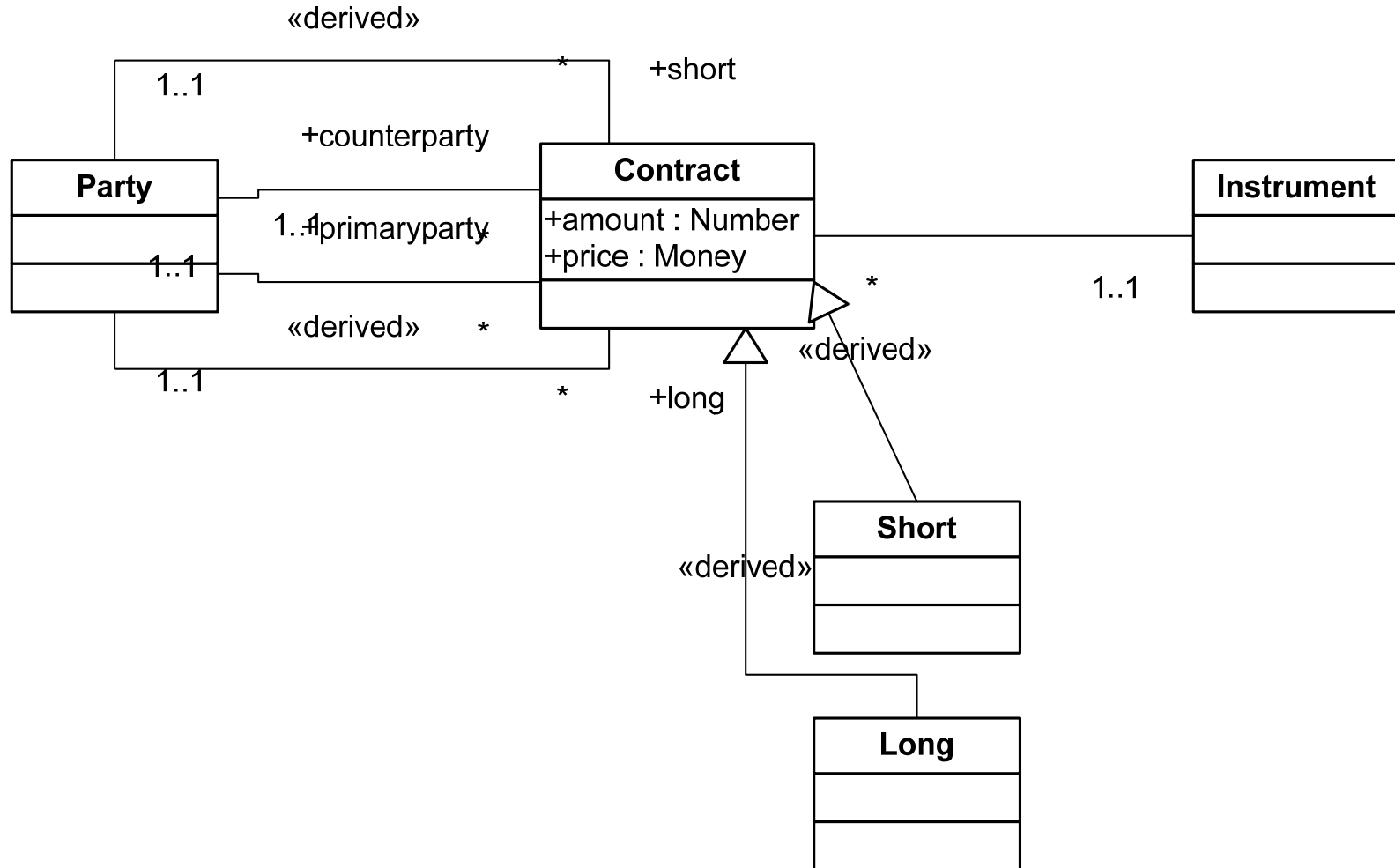
Buyers and Sellers and Relationship



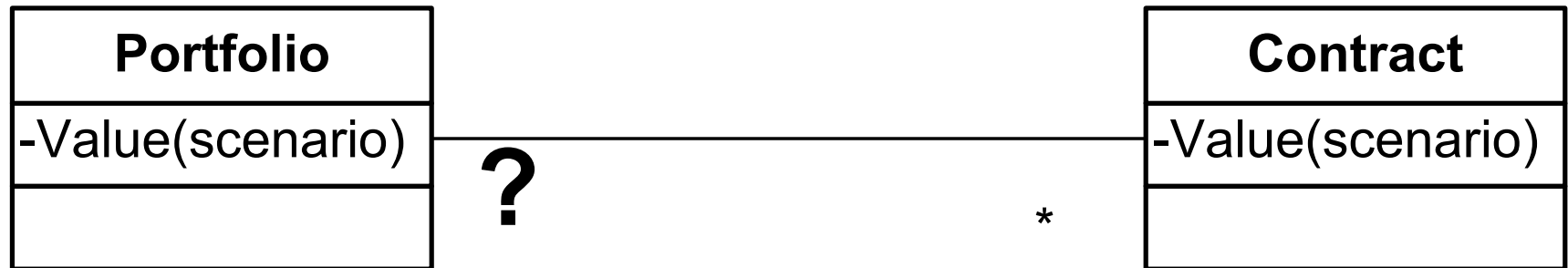
Counterparty and Primaryparty



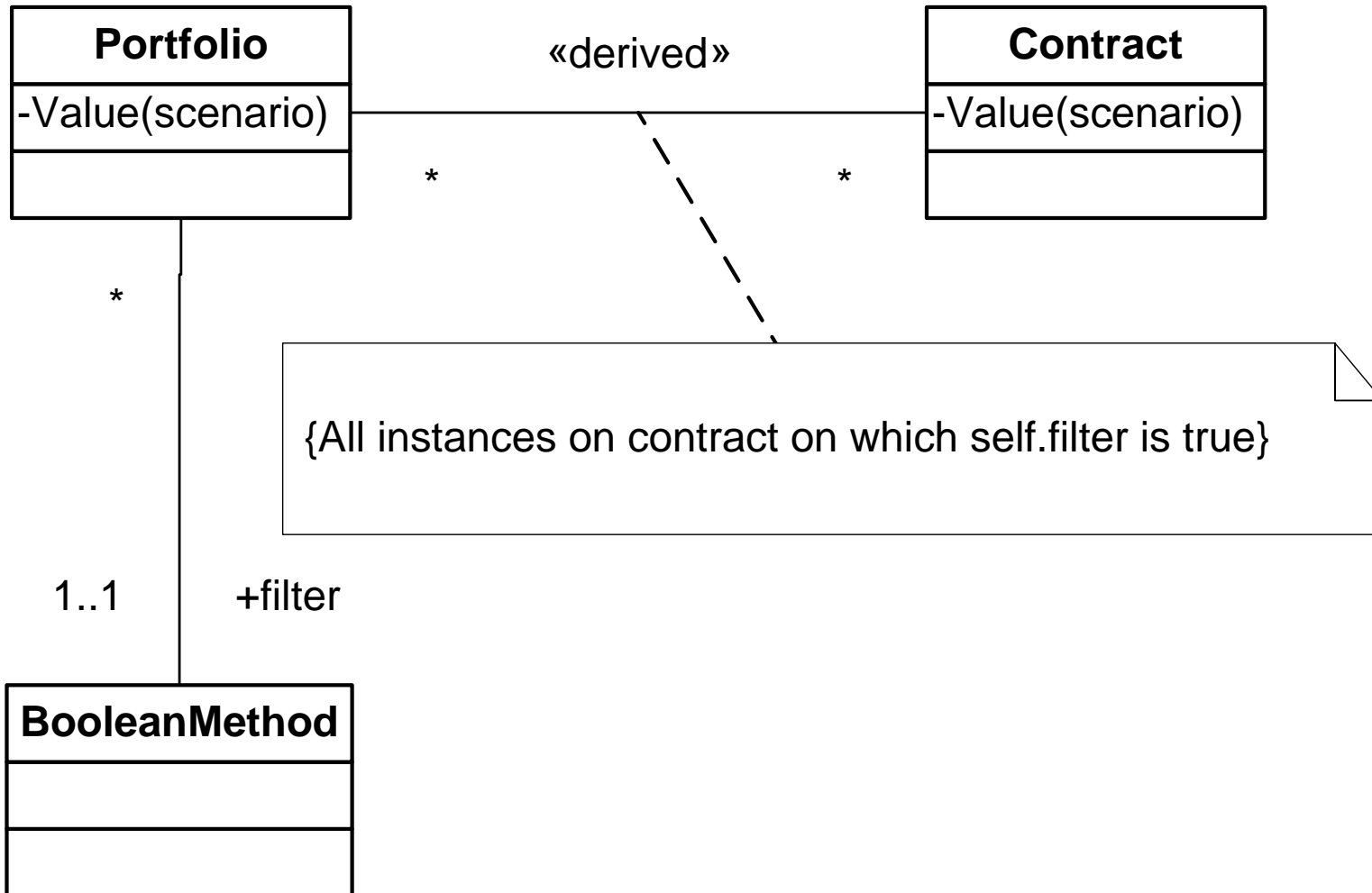
Party mappings



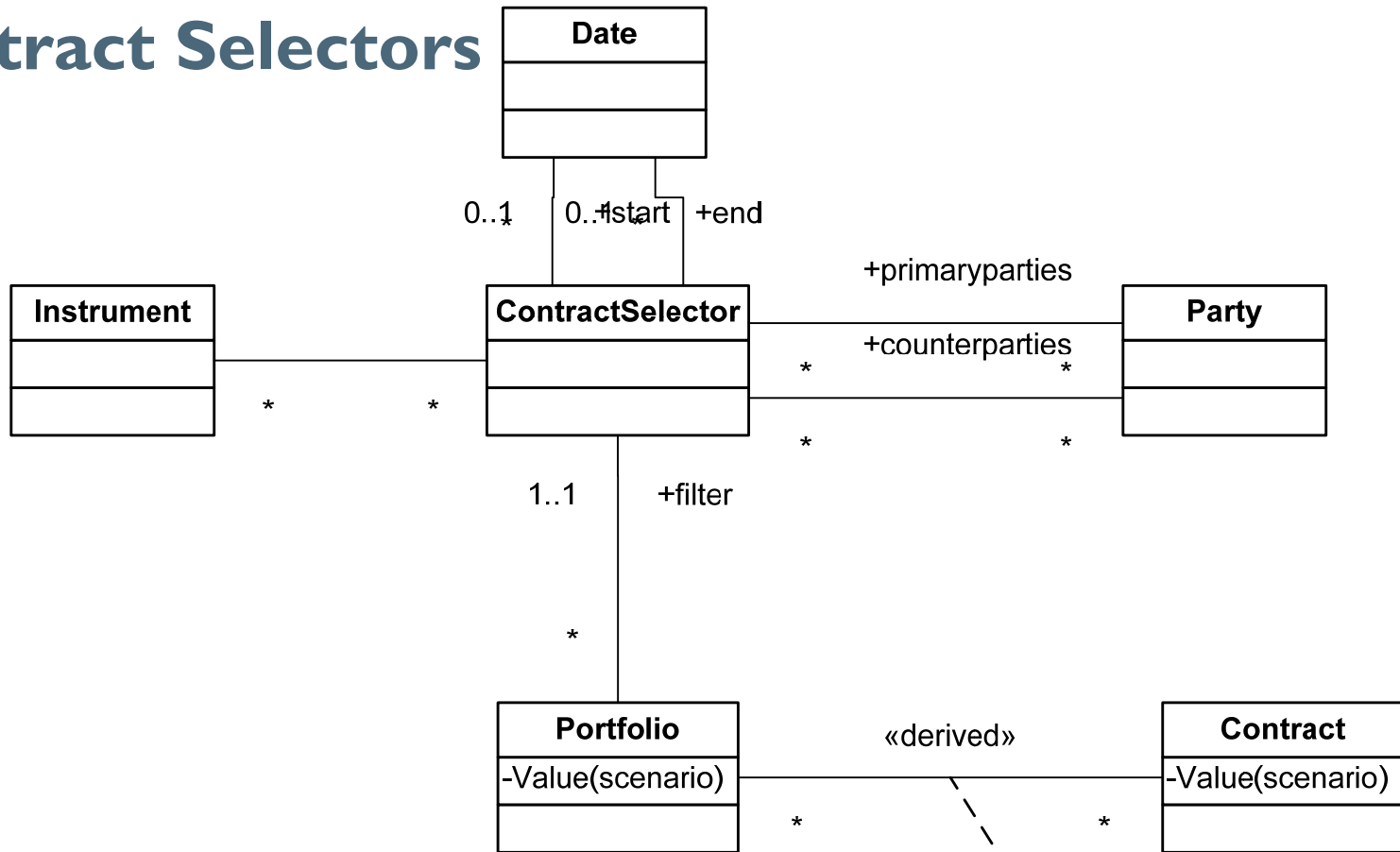
Portfolio



Dynamic portfolios with filters

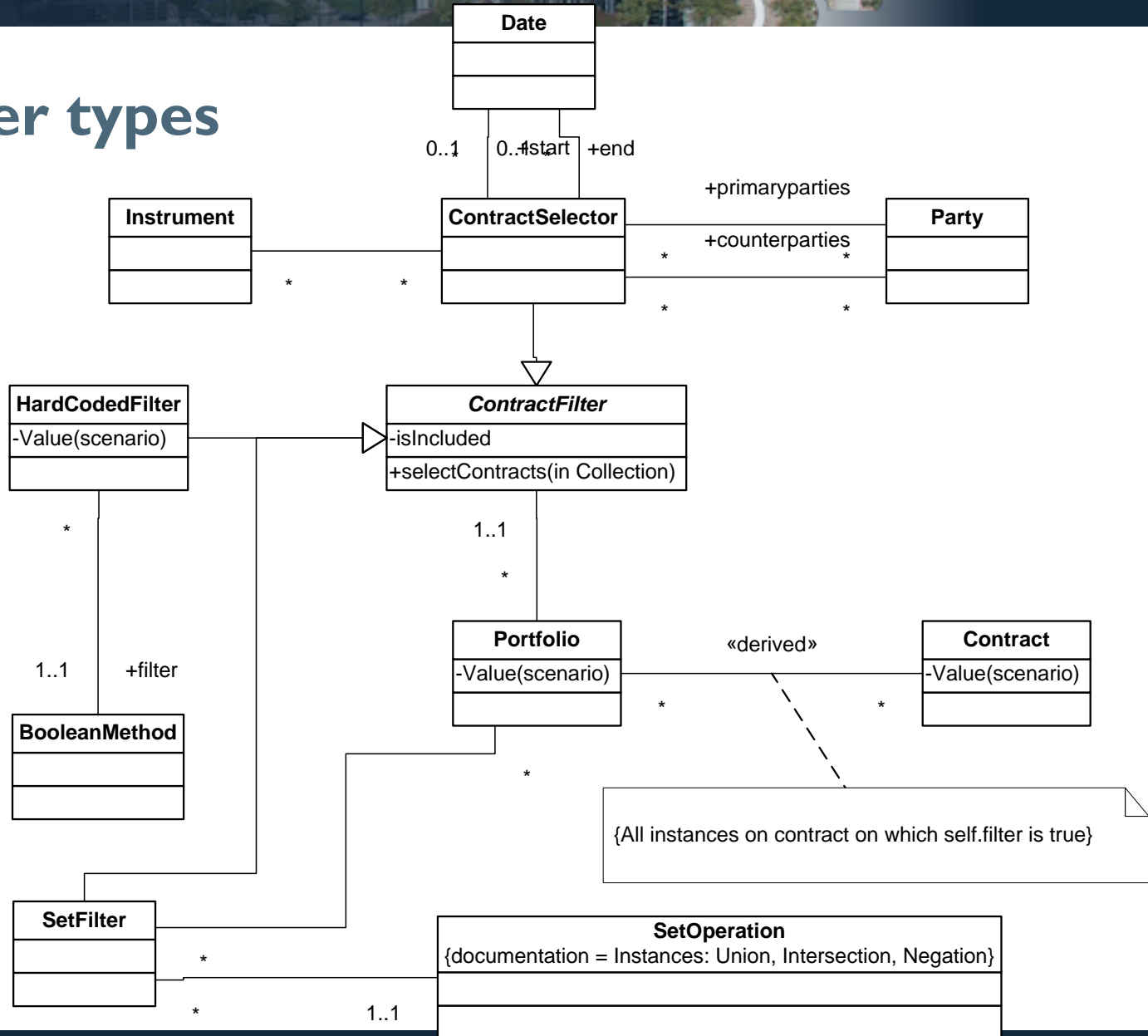


Contract Selectors

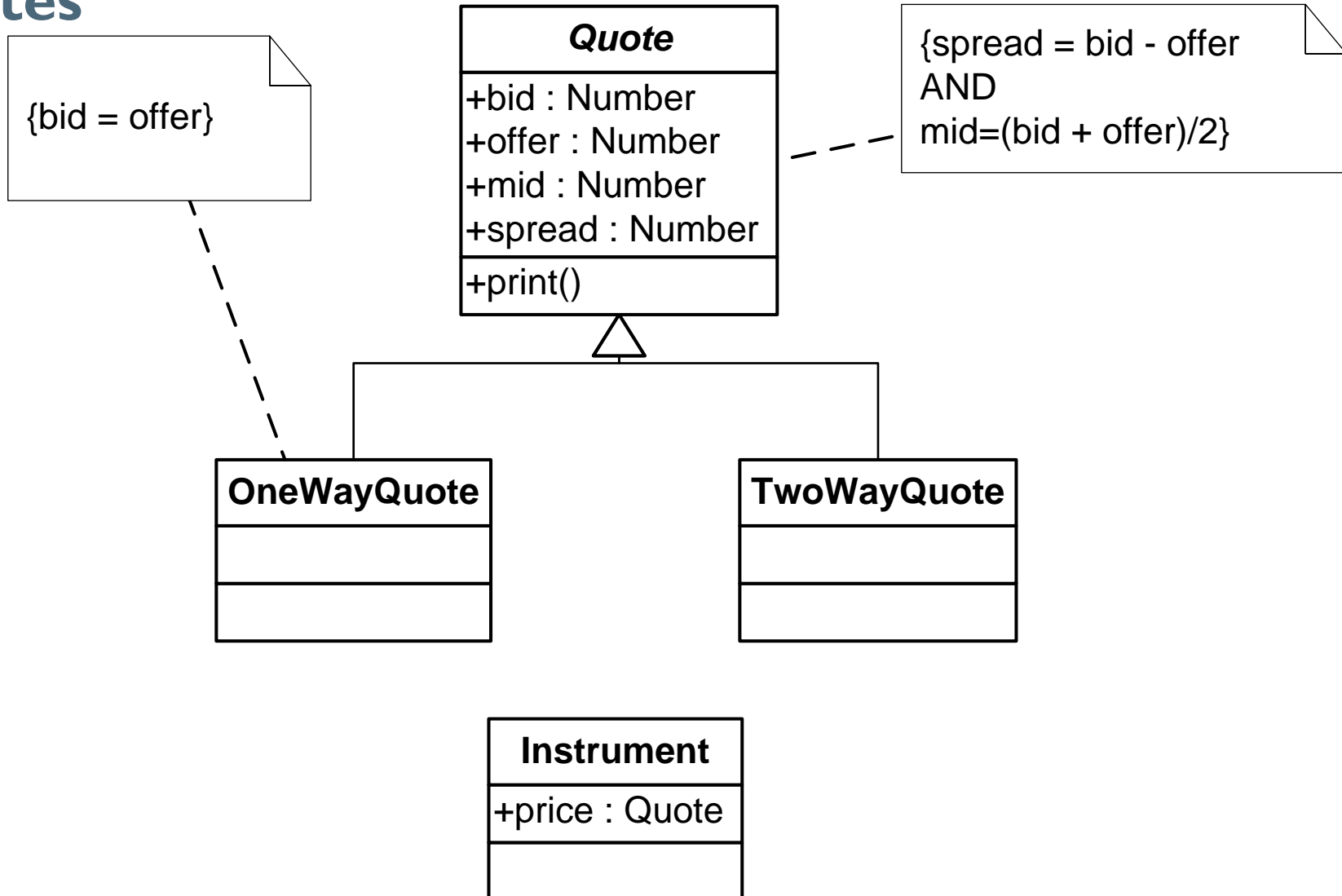


{All instances on contract on which self.filter is true}

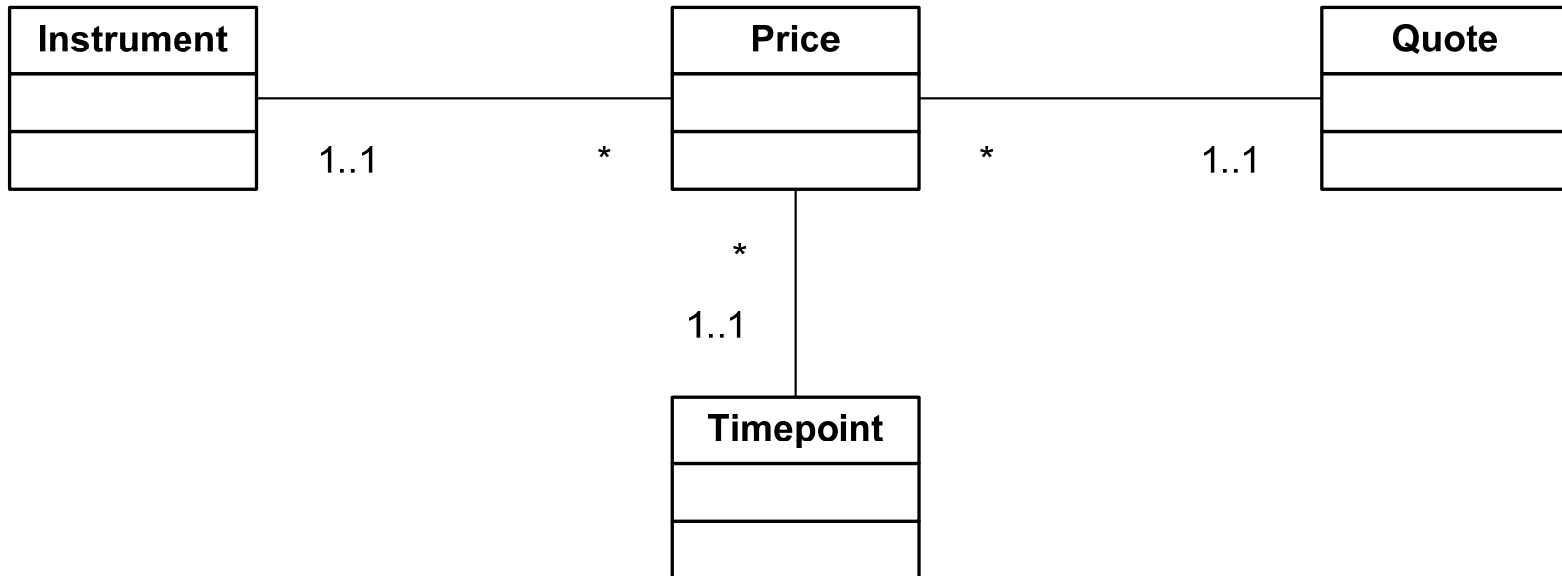
Several filter types



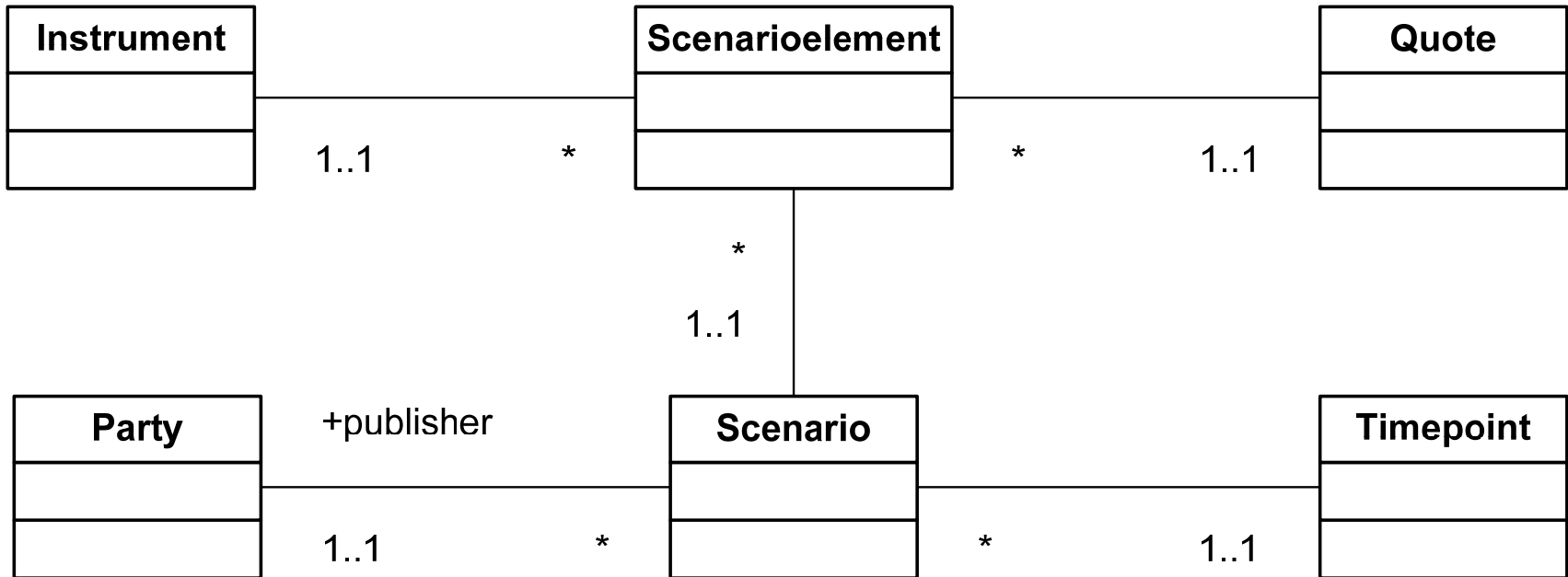
Quotes



Changes in Quotes



Scenarios



Derived Scenario Elements

